

learning @ labs for education



Learning Labs offers a holistic approach to mental wellbeing and inclusivity in one digital platform.



Contents



Intro	5
Why choose Learning Labs?	4
What's the science behind Learning Labs?	5
Total institution mental wellbeing support	6
Mental Wellbeing Action Labs	8
Total institution AT & inclusivity support	10
What AT Lab suites are included?	12
Onboarding Learning Labs at your institution	14
Added value services with Learning Labs	15
Learner testimonials	16
Licence options	17
Learning Labs Team	18
eQS Group	19
Contact Us	20



**Discover more about Learning Labs
for education in this brochure, plus
Michelle is on hand to answer any
question you may have**

Michelle Brown

Strategic Relationship Manager

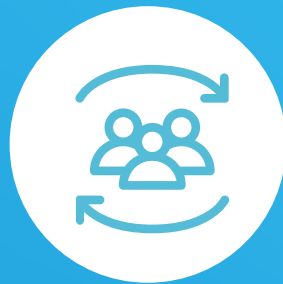
michelle.brown@e-q-s.com

07736 457 846





Why choose Learning Labs?



Student transition into HE

Support students who may have had similar tools previously in education to ensure a smooth and familiar transition into their new HE life.



Retention strategy

Offer digital learning support that is designed to meet diverse needs and help improve individual attainment, as well as overall retention rates.



Hybrid learning approach

Digital tools help to maintain a connection when students are learning remotely, creating an engaging educational experience – even at a distance.



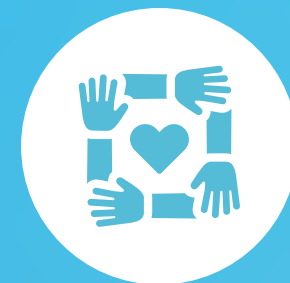
Accessible and inclusive content

Thousands of Labs on the latest AT software as well as accessibility tools, remote learning software and study and career skills – maximising your AT suite investment.



Mental wellbeing content

Enable students and staff to understand, assess, develop and share their mental wellness learning journey. Providers also have access to total institution oversight data.



Widening participation strategy

Engage and inspire students with inclusive learning that supports outreach to all students, reflecting your institution's positive and welcoming values and ethos.



What's the science behind Learning Labs?

We're an online portal that offers step-by-step tutorials using designed with advice from leading neuroscientists and educational psychologists.

We understand how the brain thinks and learns. Therefore, we understand how to design the most effective learning content, which is also inclusive for diverse learning needs.

Every feature of an AT, accessibility, study or career skills or mental wellbeing subject is broken down into bite-sized tutorials and then produced into text guides, 'how to' videos and interactive step-by-step workshops - also known as our 'Read', 'Watch' and 'Do' Labs.



Neuroscience fact:

Did you know **more than half** of the current generation of learners prefer to **learn** by **doing** something?

That's why in Learning Labs we have **interactive 'Do' Labs** on every subject matter.

We also offer Read and Watch Labs as *further resources*, which help the learner to **build additional neural scaffolding** around a subject matter.

Total institution mental wellbeing support



Our mental wellbeing support is based on our own unique concept for understanding mental wellbeing called The Six Domains of Mental Wellness™. This makes understanding mental wellbeing feel less daunting by developing greater personal awareness and an actionable plan for personal growth.

There are four support areas for learners:

1. Learn about the subject mental wellness with six in-depth Domain Labs.
2. Assess your current personal mental wellness status with our simple Domain assessments.
3. Develop personal mental wellness at your own pace with bite-sized Action Labs.
4. Share the learning journey with a mentor enabling to access your account, with oversight and direction.

For education providers:

1. Access the total institution population data dashboard.
2. Discover data trends related to domains, academic calendar or demographics.
3. Implement, record and track impact of mental wellbeing campaigns.
4. Export reports as evidence for key stakeholders.

Find out more about the mental wellness hub and how it can support learners and education providers in the videos below.

Check in with yourself



<https://bit.ly/CIWYLL>

Data dashboards



<https://bit.ly/OversightDashboard>

Mental Wellbeing Action Labs



Physical Domain

Exercise

+

How to exercise when you're busy - 10 minute toning workout

☆

📖

📝

Emotional Domain

Daily balance

+

Understanding the 4-7-8 breathing technique

★

📖

📝

Spiritual Domain

Purpose

+

How to exercise when you're busy - 10 minute toning workout

☆

📖

📝

Motivational Domain

Competence

+

How to stay focused and motivated when studying remotely

☆

📖

📝

Social Domain

Community

+

How to find your community at university

★

📖

📝

Intellectual Domain

Hobbies & interests

+

How to exercise when you're busy - 10 minute toning workout

☆

📖

📝

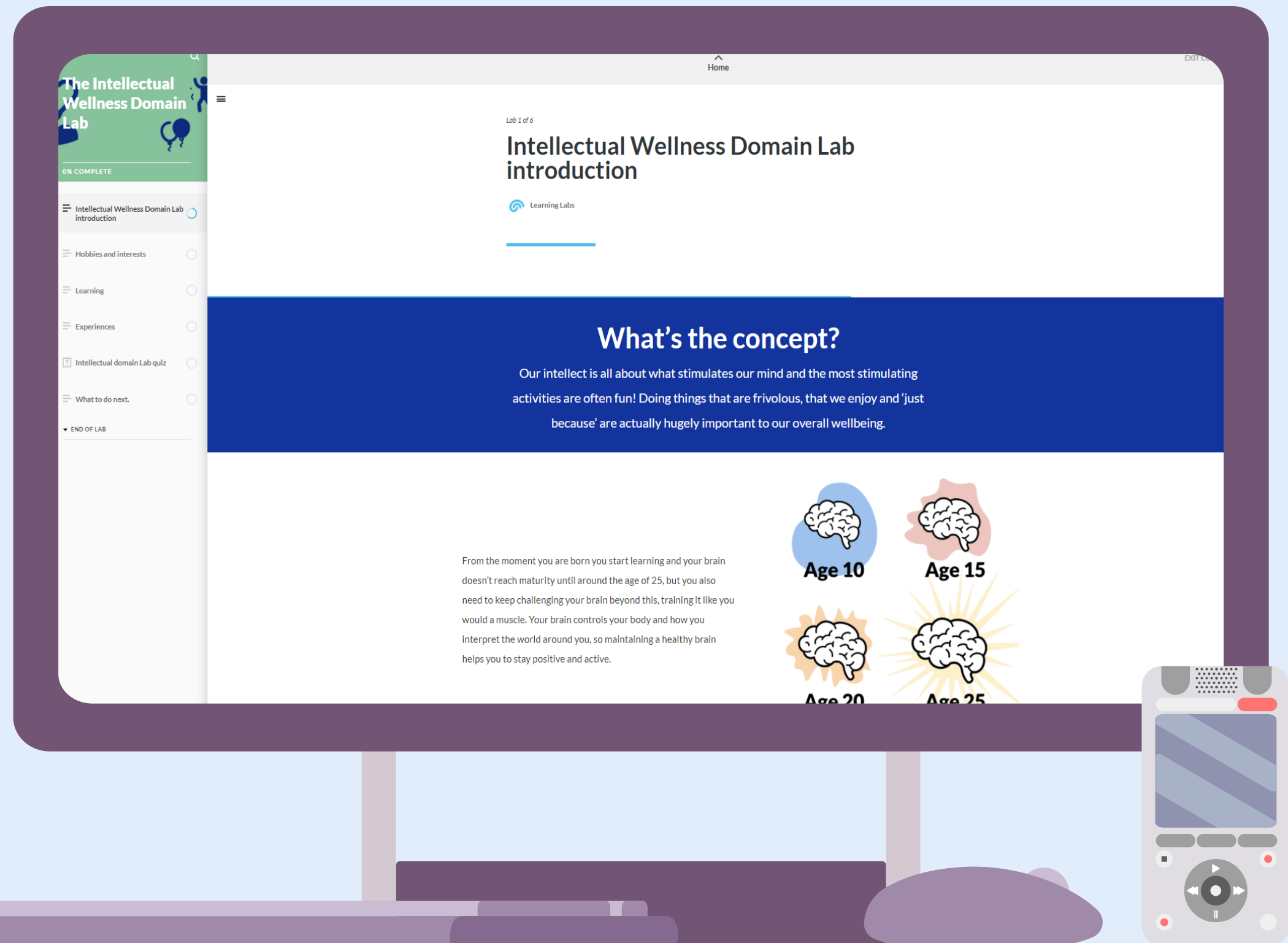


Let's take a look at our Intellectual Wellness Domain Lab!



Inside the Intellectual Domain Lab

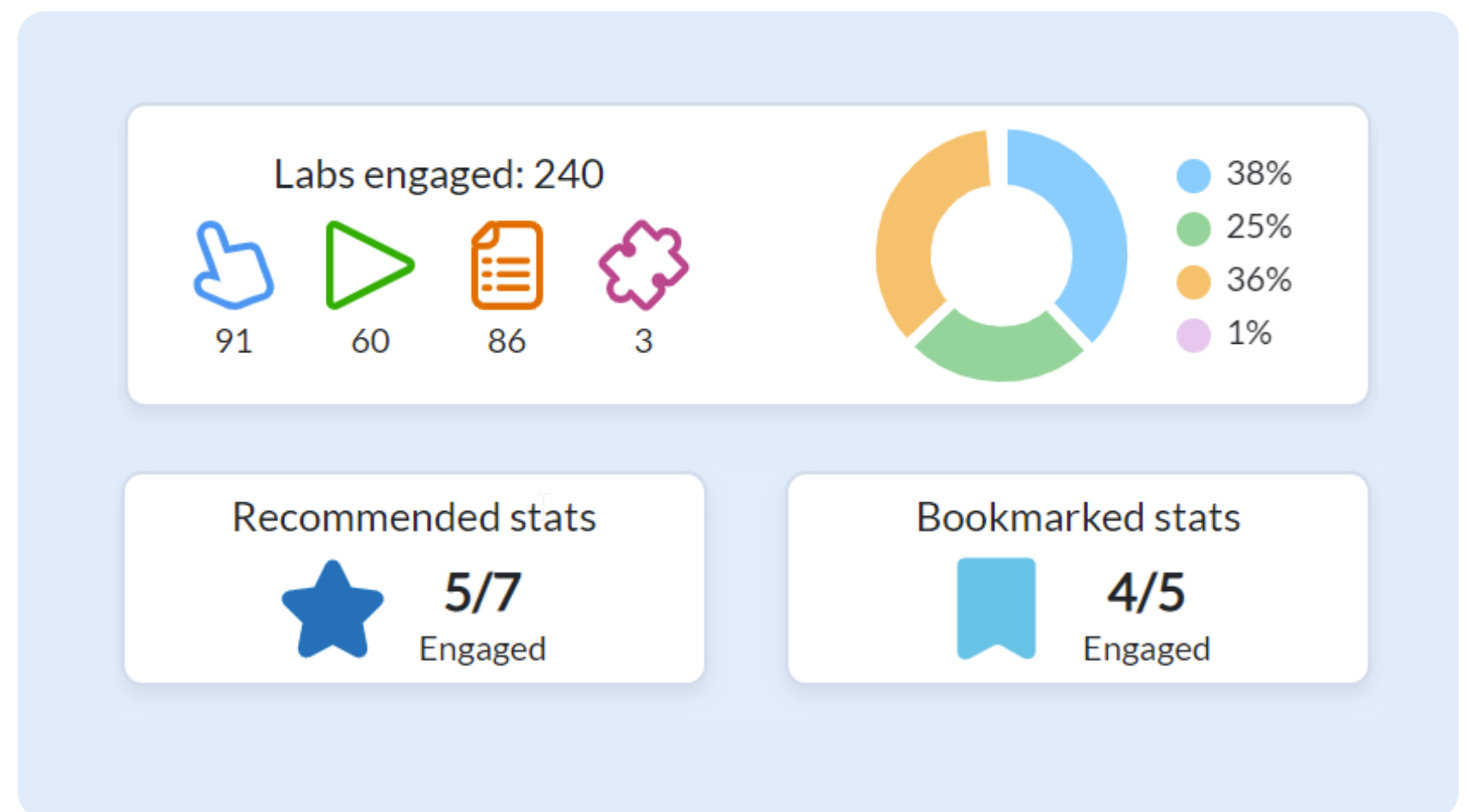
Our six Domain Labs offer in-depth learning on the domain of wellness and its key drivers. The Labs use a mix of text, video and graphic design with interactive areas to engage the learner throughout.



Total institution AT & inclusivity support



Our AT and inclusivity hub includes Labs on understanding and getting the most out of assistive technology, accessibility tools and remote learning software. This provides a site-wide digital support solution for inclusivity.



For learners:

1. Without Disabled Student's Allowance (DSA) – learn how to use site-licenced assistive technology (AT) programmes.
2. With DSA and bespoke AT, but not an AT e-learning tool – learn about their bespoke AT anytime, anywhere, any place etc.
3. Studying remotely – feel supported with Labs on using remote learning software (such as Zoom and Teams).
4. With diverse needs – feel supported with Labs on using everyday accessibility tools in OS.

For education providers:

1. Make a tangible reasonable adjustment.
2. Support a wider inclusivity strategy.
3. Evidence learners accessing support (Learning Labs can provide usage data).

Find out more about the AT & inclusivity hub and how it can support learners by watching this video.

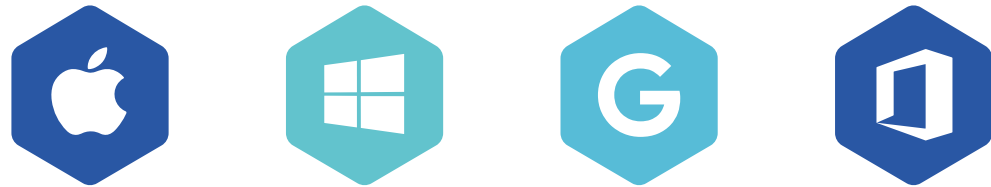
Get the most out of Learning Labs



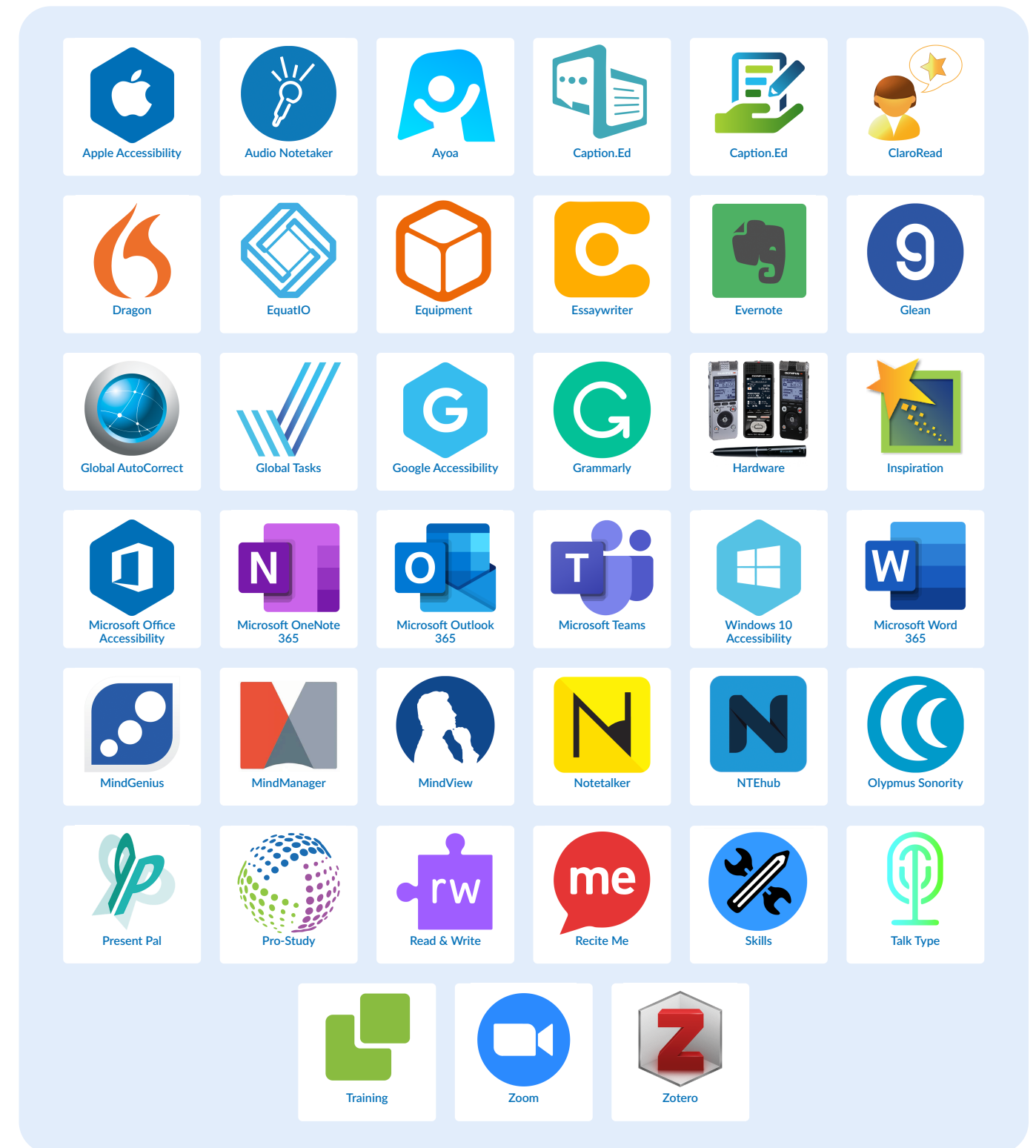
<https://bit.ly/OversightDashboard>

What AT Lab suites are included?

Learning Labs features tutorials on all of the latest assistive technology software, plus a few of the most common hardware items. Our most recent Labs Suites are on the accessibility features built into [Apple Mac OS](#), [Microsoft Windows](#), [Microsoft Office 365](#) and the [Google suite](#), plus remote learning programs such as [Zoom](#) and [Teams](#).



Our in-house learning design team constantly updates and develops new lab suites – which are always automatically updated in your portal.

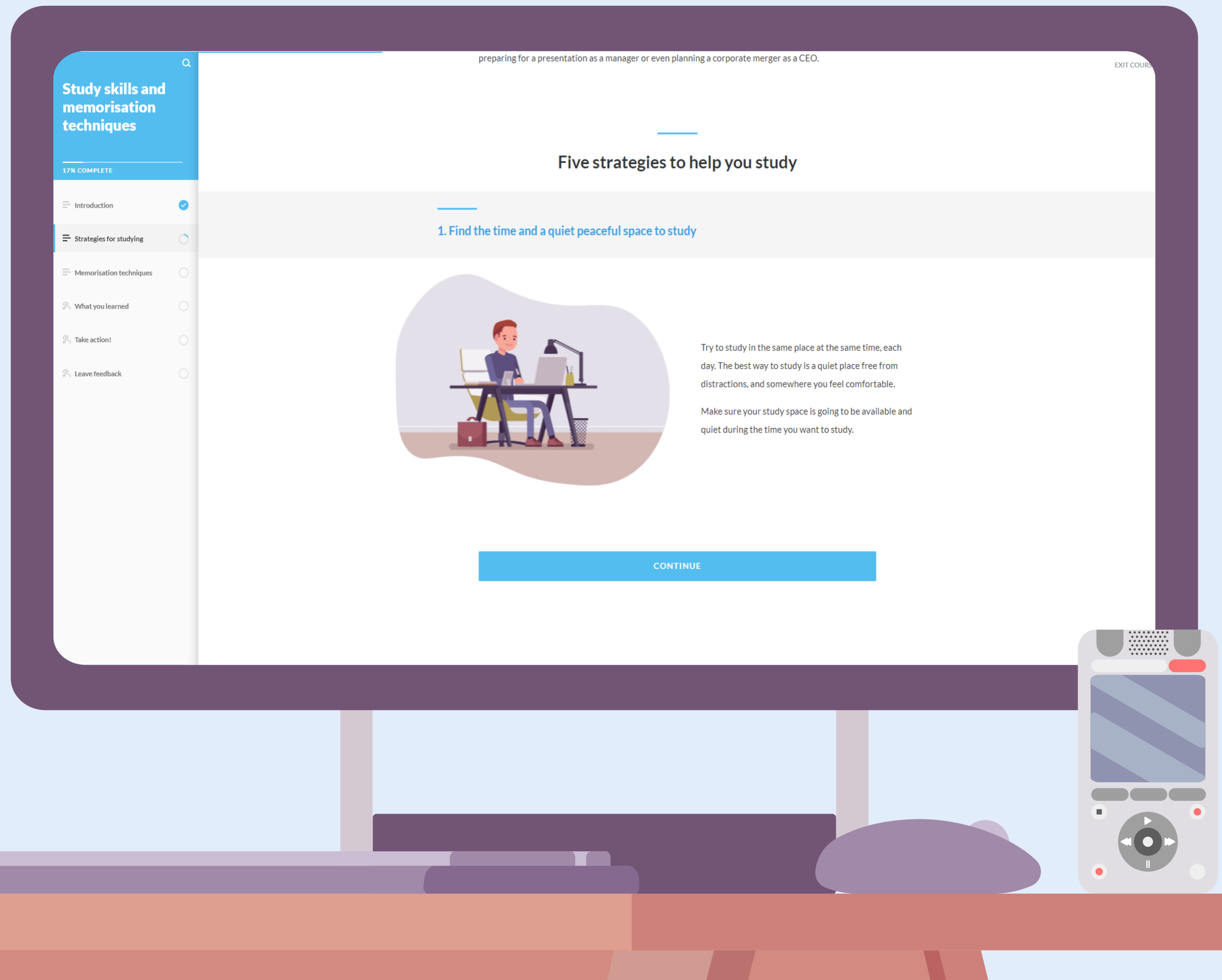




Inside a Study Skills Lab

In these Lab suites students will find study skills and techniques that can help them with aspects of their study such as time management and personal development.

Learning new study skills will give students the confidence to tackle their next piece of coursework or exam with determination.





Onboarding Learning Labs at your institution

1. Learn

CPD Webinars

- We create a bespoke team webinar, tailored to your licence package and your staff's needs.
- Every webinar attendee receives a CPD certificate and their own login.
- Webinars can be organised to suit your schedule, ensuring every necessary staff member can attend.

2. Practice

Support pack

- Use our handy practice worksheets to try Learning Labs for yourself, designed to guide you through all the main features.
- For our assistive technology licence holders we have a document which explains how Learning Labs supports different neurodiversities and disabilities.
- Got a question? We may have the answer in our FAQs document.
- Got a technical query? Get in touch with one of our team.

3. Communicate

Digital & print content

- It's time to spread the word to the wider community. We can supply graphics and copy for use in your own digital marketing campaigns.
- This can include posters for use in relevant environments, e.g.:
 - In and around the disability support team offices.
 - In close proximity to computers that have site licences.
- All content can include bespoke messaging to your institution.



Added value services with Learning Labs

We don't stop at onboarding either, you will have a dedicated account manager who we stay in touch to ensure you are getting the most from your Learning Labs site licence. If you ever feel you need additional support, here's just some of the ways we can help:

Bolt-on support services

Value

Bespoke learning content.

Our inhouse learning content design team can create bespoke Lab suites to meet your institution's needs. Want to push a specific initiative and track engagement and progress? Then a bespoke Lab suite for your students and staff might be the answer.

Campaigns.

If you want to launch a site-wide initiative, for instance to support inclusivity or mental wellbeing, our marketing team can offer creative concepts, graphics and copy related to Learning Labs to support your campaign goals.

Mental health mentors, assistive technology trainers, assistive technology supply and more.

Learning Labs is part of the eQS Group which includes assistive technology (AT) provider Invate, AT one-to-one training provider e-Quality Learning and non-medical help provider Amano. If you are looking to streamline your disability and inclusivity suppliers or look at interim support for DSA students, speak to us about what your institution needs.

Disability awareness training.

We offer a digital course in disability awareness training which includes a CPD certificate. This can be easily added to your staff's Learning Labs package for them to complete at a time that suits their needs.



Learner testimonials

Connor J Marston
University of Leeds

“It wouldn’t be possible to remember everything you are taught. It’s been three years since my training and I still need my AT. Learning Labs has been like the interactive textbook I can refer back to time and time again, for the duration of uni.”

Ella Smith
Studying Nutrition and Food Science
University of Reading

“I think Learning Labs is a great tool to have as a support throughout my whole time at university. If I am ever struggling with my work, Learning Labs will most likely have something that could help me. We also used Learning Labs in my one-to-one AT training sessions. My trainer showed me what was available and let me explore. ”

Licence options

FEATURES

Assistive Technology Lab suites on the most recent and widely-used software with four ways to learn – Read, Watch, Do and Quiz (automatically updated with every new release).

Study and career skills Lab suites for personal development.

Accessibility Lab suites on Microsoft Windows and Office, Apple MacOS and Google operating systems and tools.

Remote working Lab suites on video conferencing software including Zoom and Microsoft Teams.

Mental wellness domain explorer enabling users to explore the subject of mental wellness by learning about The Six Domains of Mental Wellness™.

Mental wellness questionnaires on each of The Six Domains of Mental Wellness™ enabling users to assess their current mental wellness status.

Mental wellness Action Labs available for every domain to provide support and interventions to help maintain and develop each of the Six Domains of Mental Wellness™.

Mentor collaboration tool to enable users to share their progress with chosen individuals.

HEI mental wellness dashboard to enable an HEI staff member to view entire student cohort status and implement effective mental wellness strategies to support students based on timely data.

**learning^{AT}
@ labs**
Assistive technology
& inclusivity

**learning⁺
@ labs**
Mental wellbeing

learning^{AT} @ labs **learning⁺ @ labs**
Bundle
The complete
solution



Bespoke licence options such as loan licences are available.

Please speak to Michelle Brown for further information on this michellebrown@e-qualitylearning.com.

Streamline your disability service providers



www.e-q-s.com

Learning Labs is part of the eQuality Solutions Group, which offers an end-to-end service offering in specialist disability support for assistive technology (AT) provision, AT training and one-to-one non-medical help.

Education providers have opted to work with eQuality Solutions (eQS) not only for the high-quality services and solutions but also to help streamline their suppliers in this specialist area.

Find out more about each company by heading to the relevant company website below. If you would like an informal discussion about the services and solutions offered by eQS, please email our Strategic Relationship Manager Michelle Brown:

michellebrown@e-qualitylearning.com

The logo for amAno is written in a bold, purple, rounded font.

Specialist non-medical help including mental health mentors, ASC study skills tutors, British Sign Language interpreters and much more, with consultants located nationwide.

www.amanosupport.com

The logo for eQL features the letters 'eQL' in a green, rounded font, followed by a green icon consisting of three stacked squares.

One-to-one assistive technology training provider, with quality assured trainers located nationwide.

www.e-qualitylearning.com

The logo for invate features an orange icon of a cube with a smaller cube inside, followed by the word 'invate' in a bold, orange, sans-serif font.

Bespoke assistive technology solutions provider, with delivery engineers located nationwide and expert technical support team.

www.invate.co.uk



Ready to speak to someone at Learning Labs?

To discuss the best option for supporting your students, get in touch and we can tailor a solution to meet your organisational goals.

Michelle Brown

Strategic Relationship Manager

michelle.brown@e-q-s.com

07736 457 846

www.learninglabs.co

info@learninglabs.co

0191 230 6689